



Anatar 8000

DATA SHEET

A self-sufficient, maintenance-free solar light pole for professional outdoor lighting applications such as pathways, car parks and secondary roads.

Light source	10 high-efficiency LEDs
Solar Operating Power (SOP)	up to 40 Watt
Max. luminous flux @ SOP	up to 6,550 lm
Luminaire efficacy	up to 164 lm/W
System Power Ratio (SPR)	up to 10
Autonomy	at least 3 nights (36h)
Pole height	8.0 / 10.0 / 12.0 m

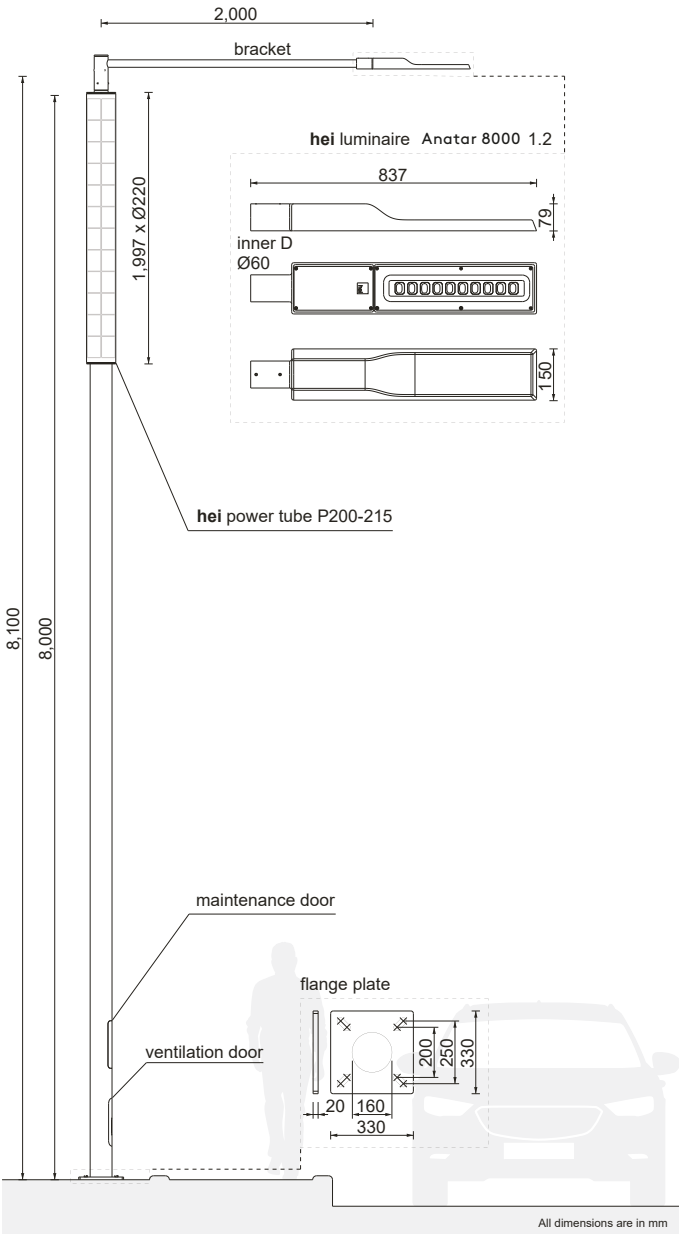
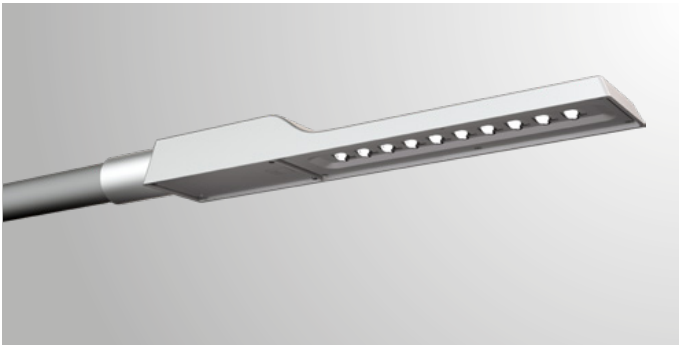
STANDARDS AND COMPLIANCES

ISO	ISO 9001-2015
Illumination	According to EN 13201, IESNA RP-8-00
Light pole	EN 40
IP Rating (Luminaire)	IP66
Power tube	IP66
impact protection rating	IK06
Photovoltaics	EN 61215 (adapted)
CE	✓
RoHS	✓

GLOBAL WARMING MITIGATION - ENERGY AND CO² SAVINGS

Electrical energy and CO² emission savings of one solar light pole in 30 years compared to:

Standard cabled LED	7,400 kWh / 3.7 tons CO²
HPS light (100W)	26,300 kWh / 13.2 tons CO²
Specific CO ² emissions:	0.5 kg CO² per kWh



LUMINAIRE

Solar Operating Power (SOP)	up to 40 Watt
Max. luminous flux @ SOP	up to 6,550 lm
Luminaire efficacy	up to 164 lm/W
Correlated Colour Temperature (CCT)	4,000 K (white) 3,000 K (warm white) - optional 2,700 K - optional
Colour rendering index (CRI)	≥ 70 (optional >=80)
Life time of LEDs (L70/B10)	> 90,000 hours
Material (housing)	Aluminium
Finishing (housing)	RAL 9006 other colors optional

Weight **4 kg**

Pole

Wind class acc. EN 40	45 m/s
Pole height	8.0/10.0/12.0 m
Light spot height	8.1/10.1 / 12.1 m
Pole diameter	220 mm
Pole weight for P200/215	132 / 165 / 235 kg
Pole weight for P400/215	126 / 163 / 233 kg
Foundation	Flange plate Sleeve foundation - optionally
Material	Steel
Finishing	RAL 9006 other colors optional
Corrosion Class	C4

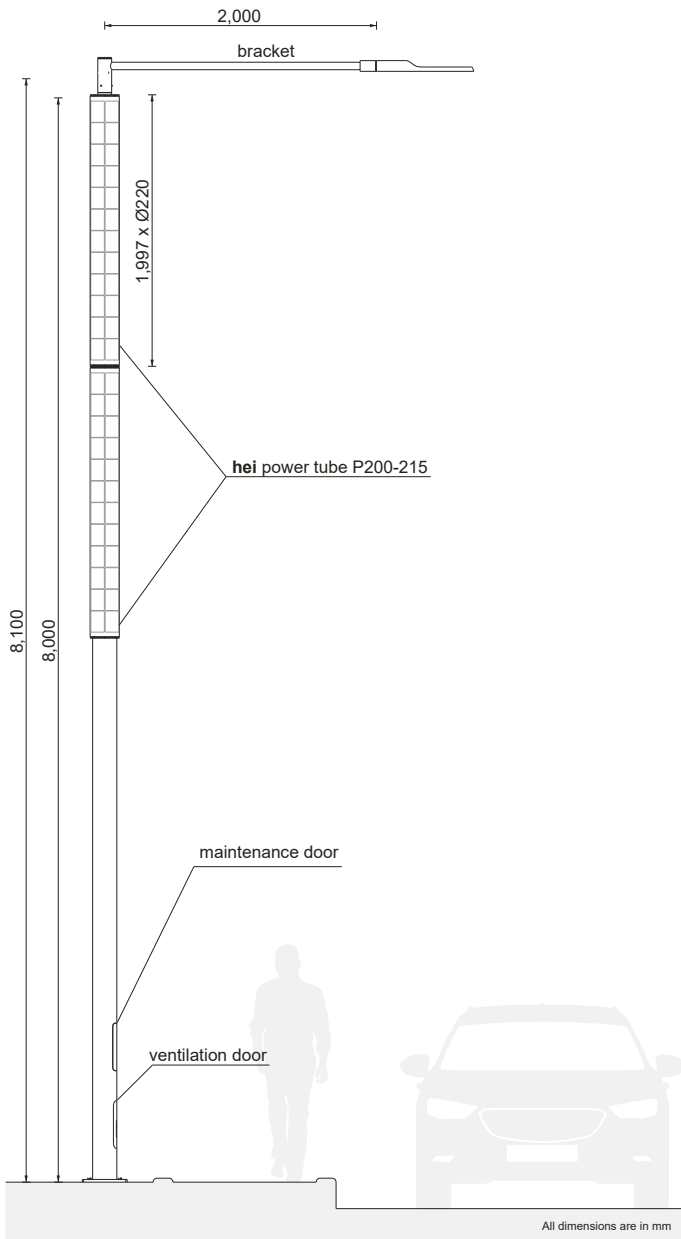
Other pole heights, bracket lengths, and boom angles optional.

POWER CONTROL

Programmable microcontroller	✓
Controller location	Pole
Dynamic light profile	Customer-specific
Motion detector	Optionally
Hybrid power supply (AC back-up)	Optionally

BATTERY

Technology	VRLA, cycle type	LiFePo4
Location	inside pole	inside pole
Capacity (up to)	5 x 23 Ah / 12 V	6x20 Ah / 12 V
Dimensions [mm]	6x L181 x W77 x H167	6x L181 x W77 x H167
Temperature range	-20°C to 45°C	-20°C to 50°C
Weight	30 kg	18 kg



POWER TUBE P200-215

No. Of Power Tubes	1
Technology	Silicon solar cells
Number of solar cells (array)	48 pcs (4 strings x 12 pcs / string)
Nominal power of solar cells	267 W _p
Dimensions [mm]	L1,997 x Ø220 mm
Weight	17 kg

POWER TUBE P400-215

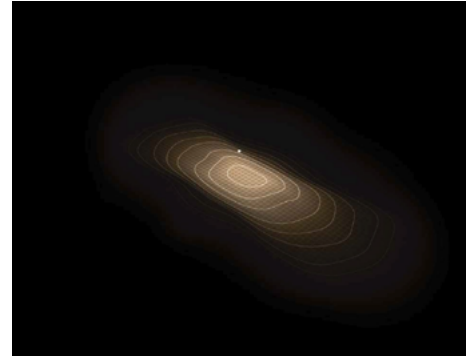
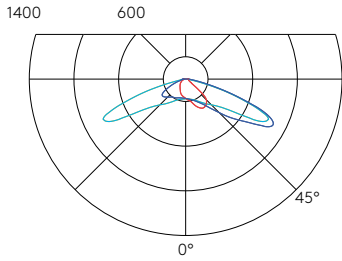
No. Of Power Tubes	2
Technology	Silicon solar cells
Number of solar cells (array)	2 x 48 pcs (4 strings x 12 pcs / string)
Nominal power of solar cells	2 x 267 W _p
Dimensions [mm]	2 x L1,997 x Ø220 mm
Weight	2 x 17 kg

SYSTEM

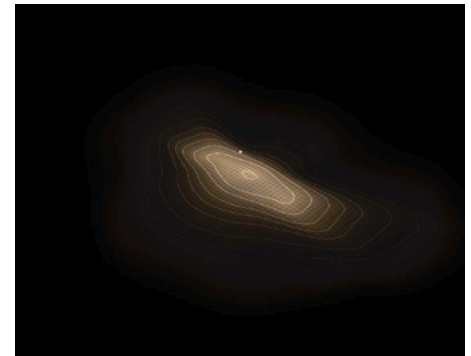
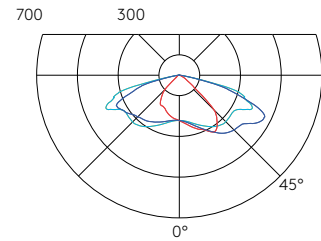
Power Tube	P200-215	P400-215
System Power Ratio (SPR)	5	10
Autonomy	at least 3 nights (36h)	
Total weight :		
8m	217 kg	210 kg
10m	262 kg	255 kg
12m	360 kg	343 kg

PHOTOMETRIC DATA

asymm. street



asymm. street with pathway



asymm. street wide with pathway

